

# Greenland

- ASP Arctic Science Partnership
  - <http://www.asp-net.org/>
  - <http://arctic.au.dk/>
- General info of the Greenland Institut of Naturel Resources
  - <http://www.natur.gl/en/the-institute/>
  - The Institute has no direct activities in relation to the Arctic Ocean – see slide
- Cooperation with Iceland, Canada, Norway and Denmark

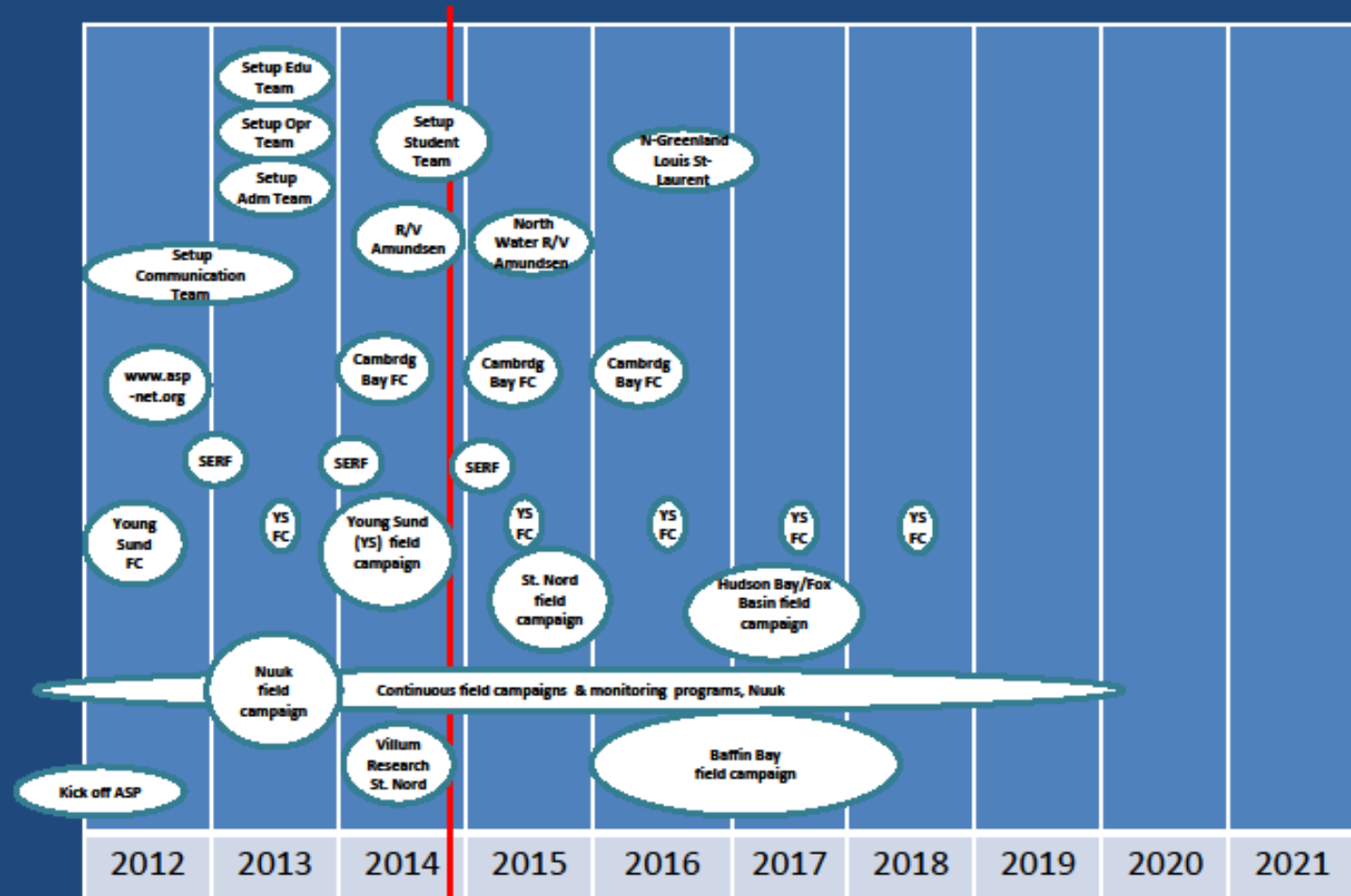
# ASP Arctic Science Partnership

## - With some relevance for the Arctic Ocean



Søren Rysgaard  
Professor in  
Manitoba,  
Copenhagen  
and  
Nuuk

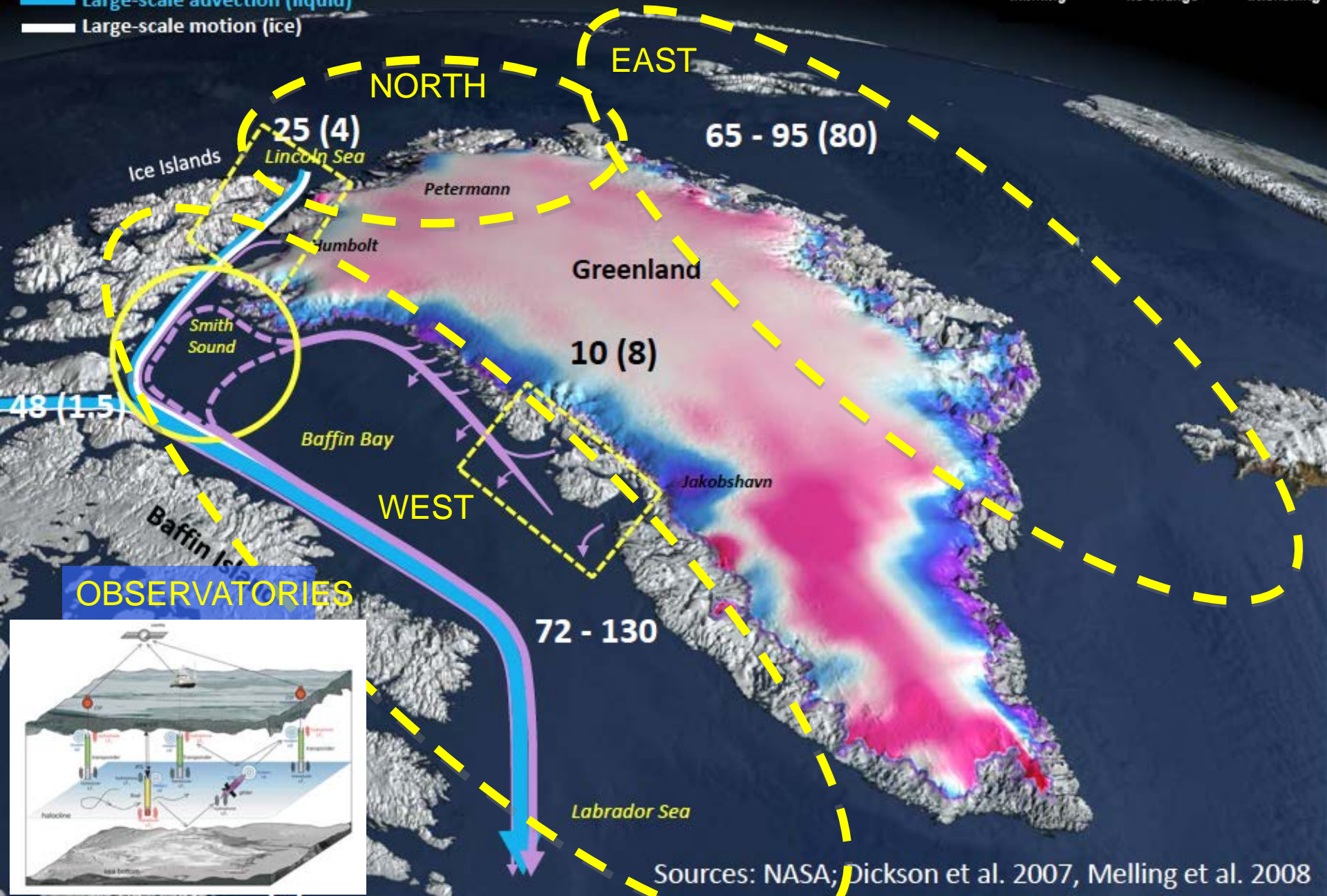
# ASP roadmap 2012-2021



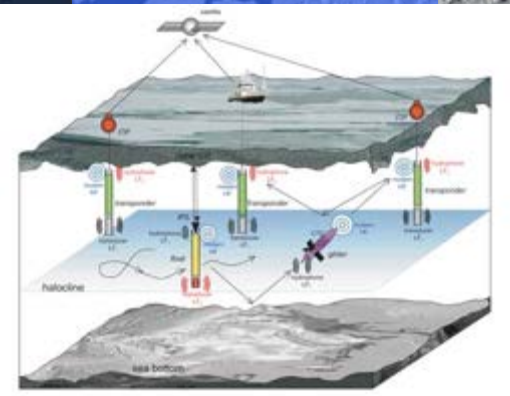
# ASP-ICE (2016-2021)



- Glacial (liquid & ice)
- Large-scale advection (liquid)
- Large-scale motion (ice)

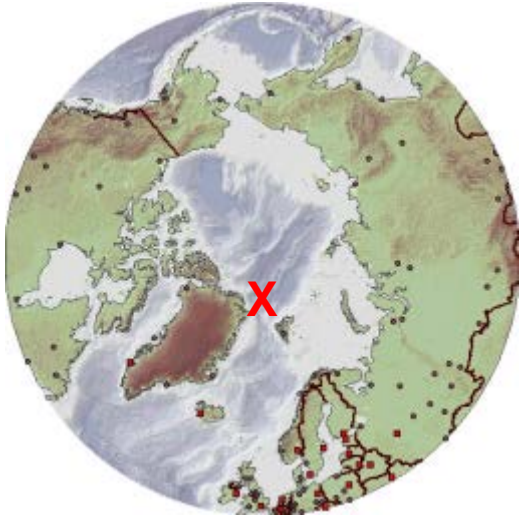


## OBSERVATORIES



Sources: NASA; Dickson et al. 2007, Melling et al. 2008

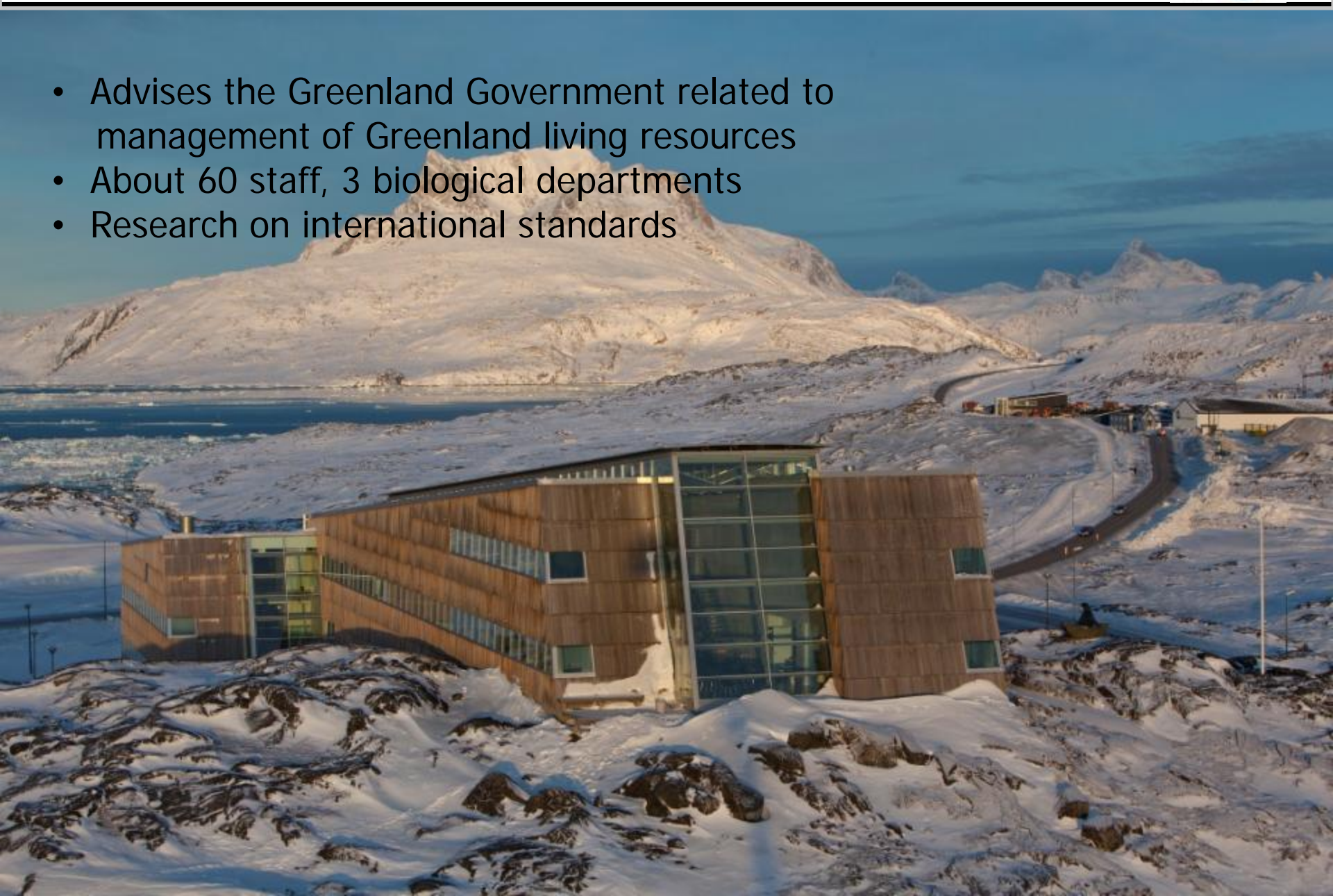
# Work off Station Nord - 2015



- <http://www.asp-net.org/content/2015-station-nord-campaign>



- Advises the Greenland Government related to management of Greenland living resources
- About 60 staff, 3 biological departments
- Research on international standards





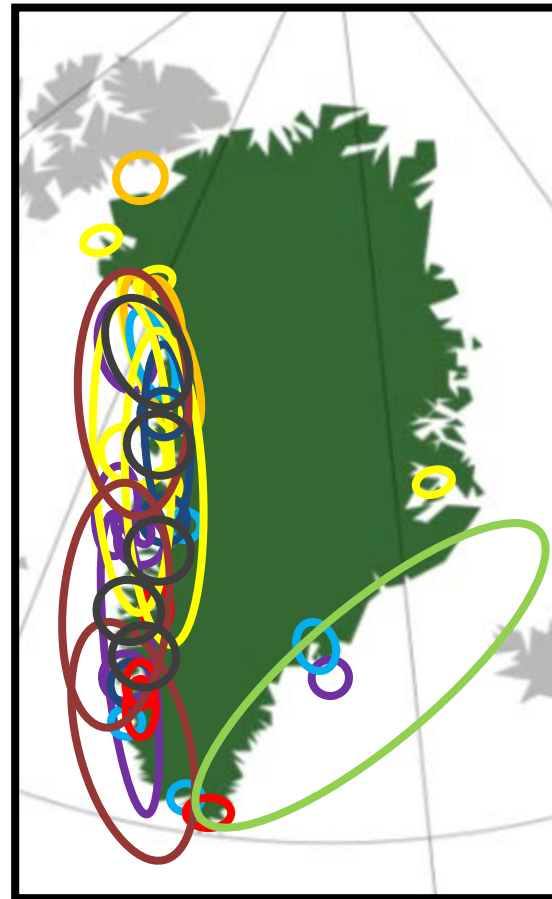
## Marine Platforms



# An esample of Fieldwork 2012



-  Trawl West Gl.
-  Trawl East Gl.
-  Coastal surveys



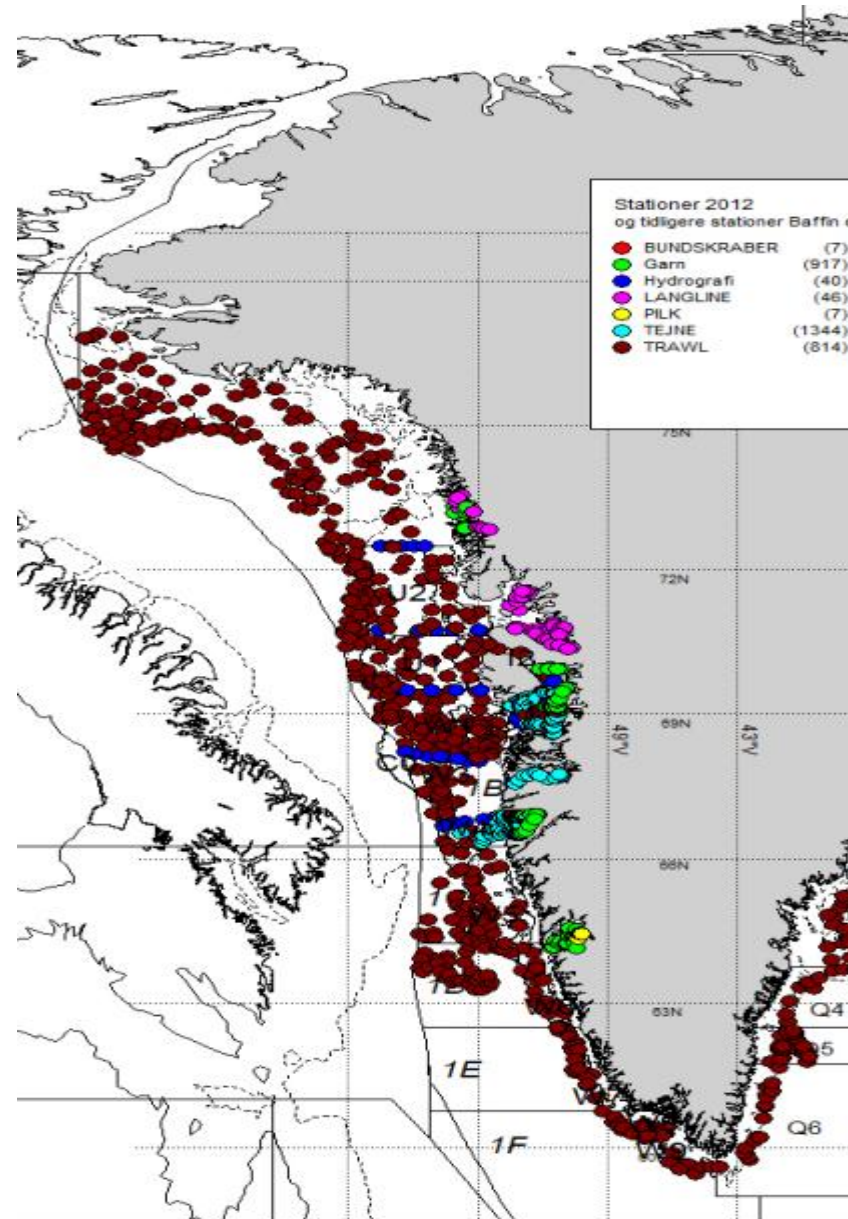
-  Terrestrial
-  Birds
-  Seals
-  Polar bears
-  Toothed whales/  
walrus
-  Baleen whales

<http://www.natur.gl>





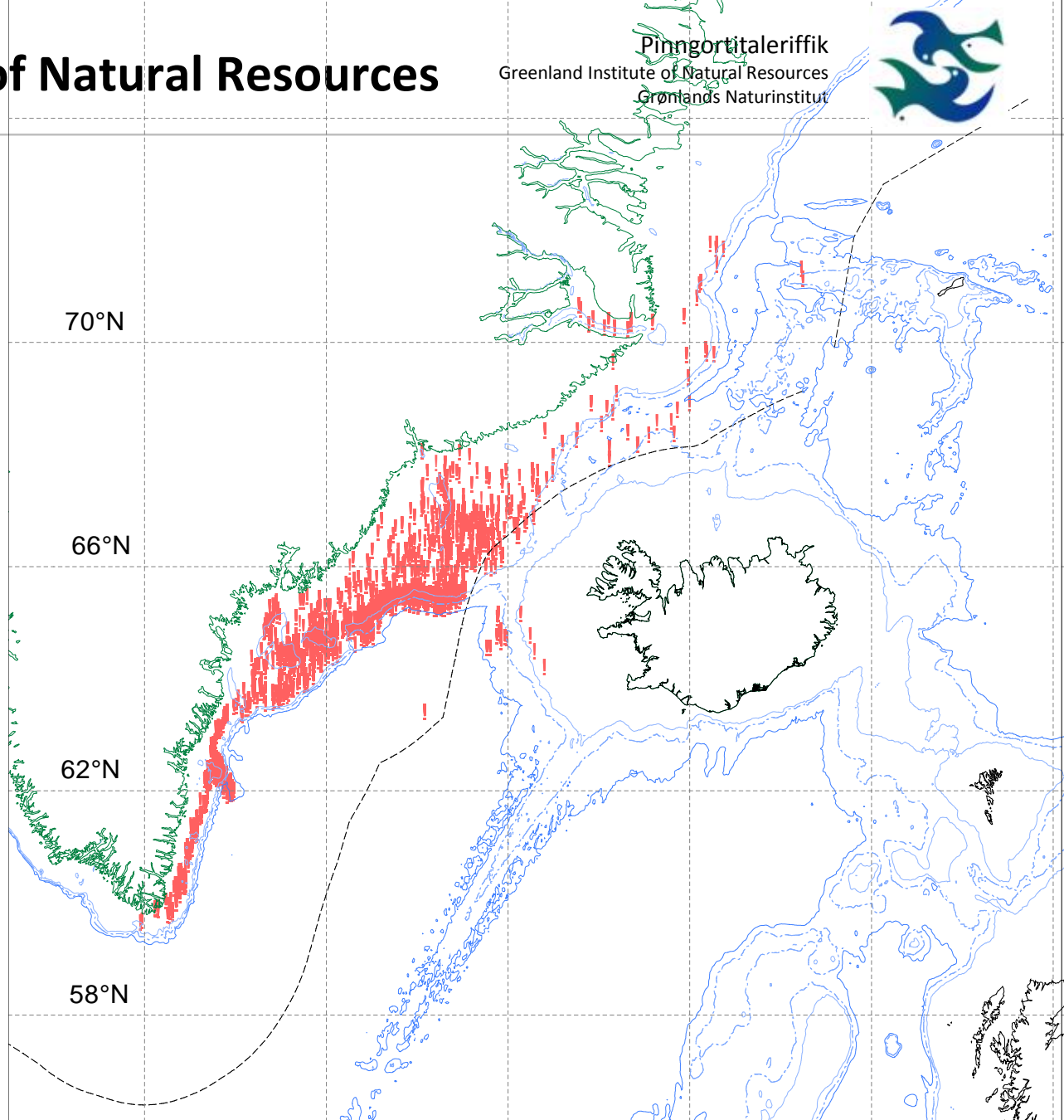
## Survey groundfish + Cooperation with Canada in Canadian water





Biological  
groundfish surveys  
in East Greenland

And from 2012  
pelagic surveys in  
the area in  
cooperation with  
Iceland



# Environmental studies

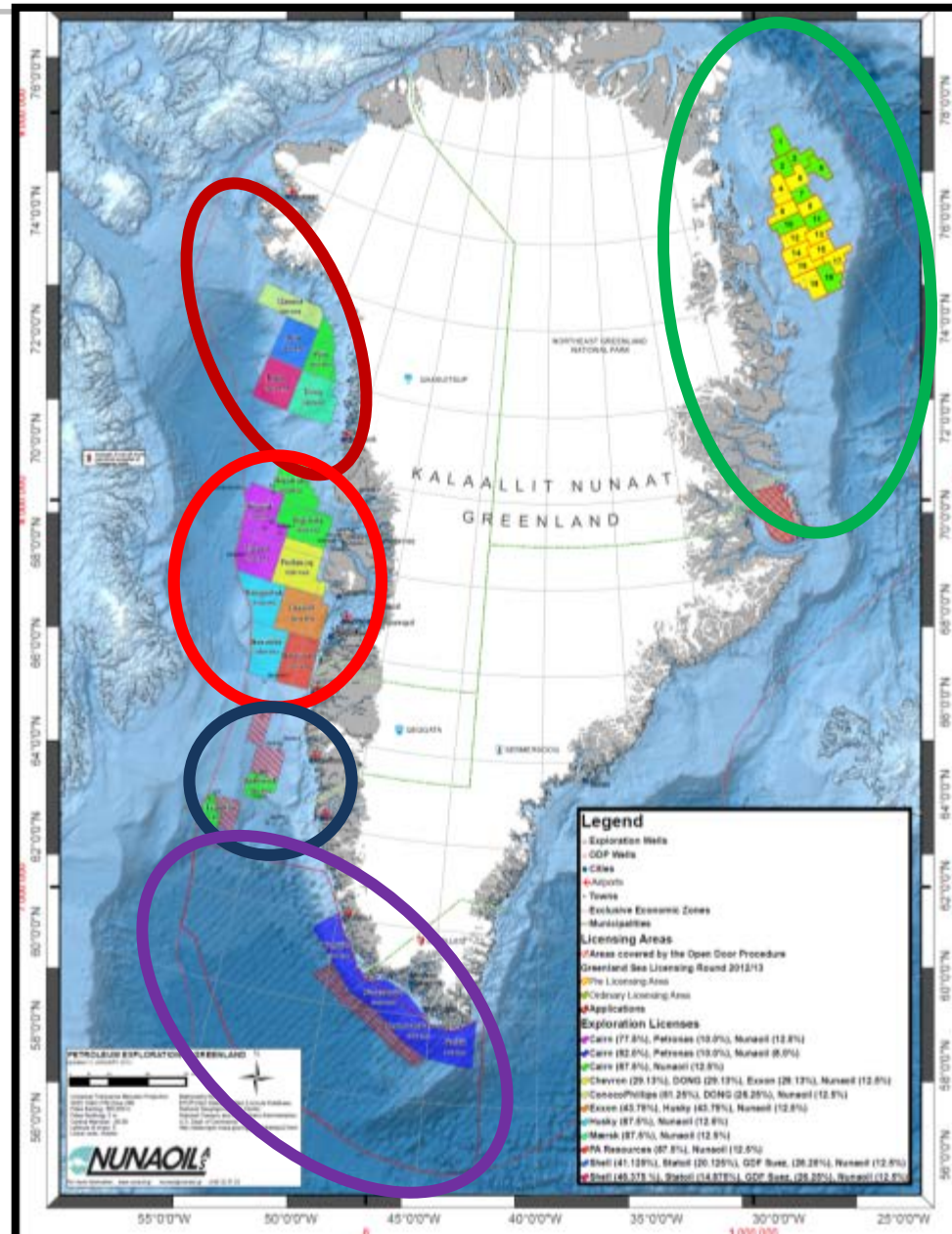


**Eastern Baffin Bay**  
2009, 2011, 2014

**Disko West**  
2007, 2013

**Davis Strait**  
2012

**South Greenland**  
2012



**Greenland Sea 2009,**  
**2011, 2017?**